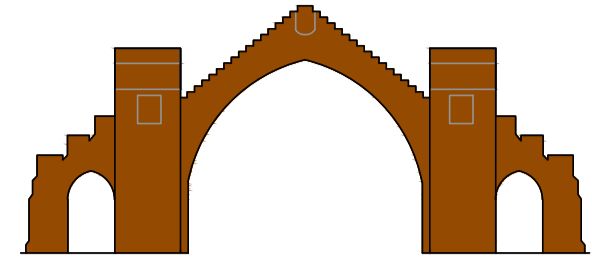




3a Clerk Street
Brechin, Angus
DD9 6AF

Telephone
Office: 01356 623435
Mobile: 07802 742226
Fax: 01356 625182

Email: aaron@jwsouttar.com
Website: www.jwsouttar.com



EDZELL GOLF CLUB

TITLE
PROPOSED ALTERATIONS TO
CLUBHOUSE AT
EDZELL GOLF CLUB

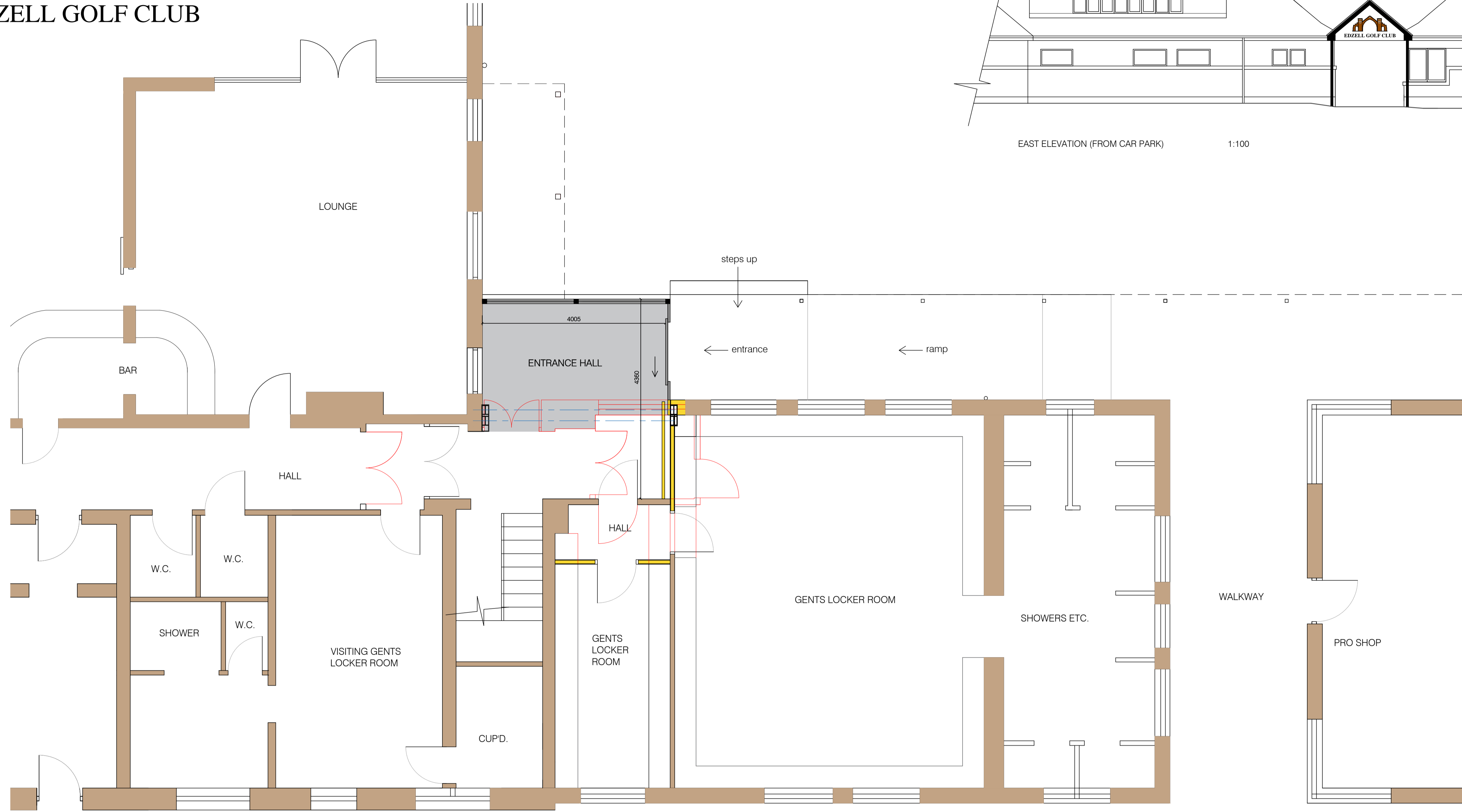
CLIENT
EDZELL GOLF CLUB

DESCRIPTION
FLOOR PLAN AND
ELEVATIONS

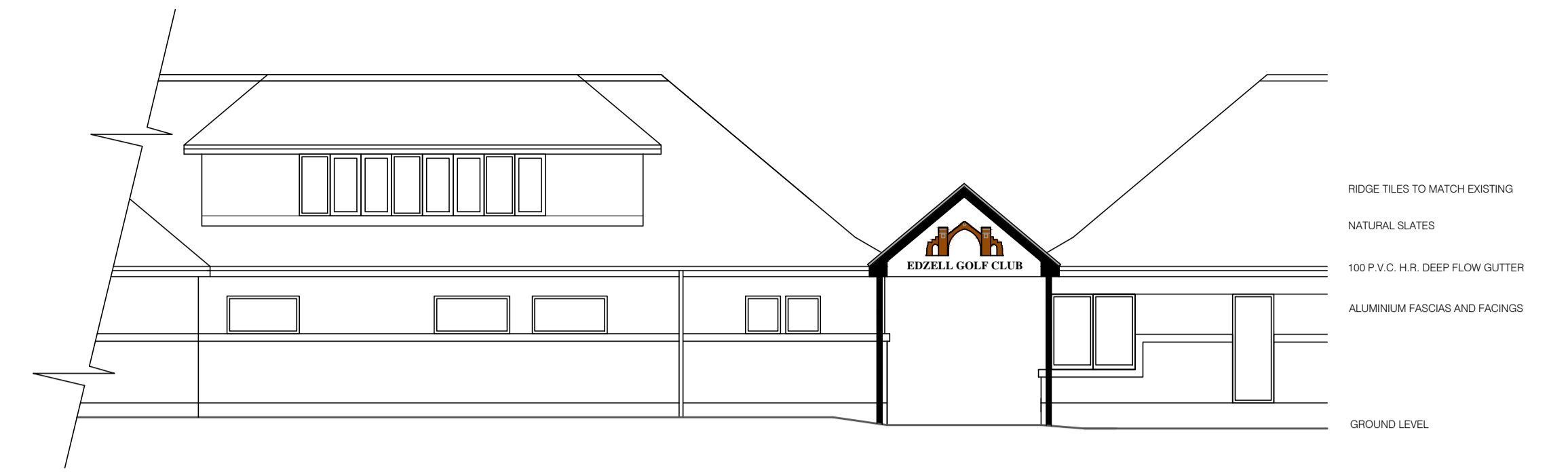
DRAWING TYPE
SKETCH PROPOSAL

DWG No. SP9A / 1996 / 17 SCALE -
DATE DEC. 2017 REVISION

REV.	DATE	ACTION



PARTIAL GROUND FLOOR PLAN 1:50



EAST ELEVATION (FROM CAR PARK) 1:100

RIDGE TILES TO MATCH EXISTING
NATURAL SLATES
100 P.V.C. H.R. DEEP FLOW GUTTER
ALUMINIUM FASCIAS AND SOFFITS
GROUND LEVEL



WEST ELEVATION (FROM GOLF COURSE) 1:100

VERGE OF COLOUR TO COMPLIMENT SLATES
NATURAL SLATES
100 P.V.C. H.R. DEEP FLOW GUTTER
ALUMINIUM FASCIAS AND SOFFITS
ALUMINIUM WINDOWS AND DOORS
GROUND LEVEL



NORTH ELEVATION (FROM PRACTISE GREEN) 1:100

RIDGE TILES TO MATCH EXISTING
NATURAL SLATES
100 P.V.C. H.R. DEEP FLOW GUTTER
ALUMINIUM FASCIAS AND SOFFITS

VERGE OF COLOUR TO COMPLIMENT SLATES
NATURAL SLATES
100 P.V.C. H.R. DEEP FLOW GUTTER
ALUMINIUM FASCIAS AND SOFFITS
ALUMINIUM WINDOWS AND DOORS
GROUND LEVEL